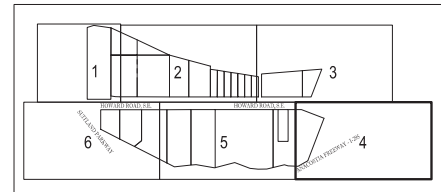


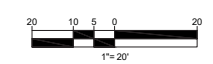
MATCH LINE SHEET 5

LEGEND

OH	OVERHEAD WIRES	123	EXISTING CONTOUR		TELEPHONE MANHOLE		BOLLARD		UTILITY POLE/LIGHT POLE
	APPROX. LOC. UNDERGROUND GAS LINE PER UTILITY MARKOUT		EXISTING SPOT ELEVATION		ELECTRIC MANHOLE		U-BOLLARD		GUY WIRE
	APPROX. LOC. UNDERGROUND WATER LINE PER UTILITY MARKOUT		EXIST. TOP OF CURB ELEVATION		WATER MANHOLE		METAL GUARDRAIL		TRAFFIC SIGNAL POLE
	APPROX. LOC. UNDERGROUND TEL. LINE PER UTILITY MARKOUT		EXIST. GUTTER ELEVATION		STORM DRAIN MANHOLE		BENCHMARK		TREE LINE
	APPROX. LOC. UNDERGROUND ELEC. LINE PER UTILITY MARKOUT		UTILITY POLE		WATER METER		FENCE		TREE (SIZE AS NOTED)
	APPROX. LOC. UNDERGROUND WATER LINE PER REF. #1		TRAFFIC SIGNAL		GAS METER		LANDSCAPED AREA		FIRE DEPARTMENT CONNECTION
	APPROX. LOC. UNDERGROUND ELEC. LINE PER REF. #3		MONITORING WELL		SIGN		BORING LOCATION		
	APPROX. LOC. UNDERGROUND SEWER LINE PER REF. #2 & 3		ELECTRIC METER		CLEAN OUT		AREA LIGHT		
	APPROX. LOC. UNDERGROUND STORM LINE PER REF. #2 & 3		ELECTRIC BOX		HYDRANT		PAINTED ARROWS		
	APPROX. LOC. FLOOD PLAN		SANITARY MANHOLE		WATER VALVE		STORM & SANITARY STRUCTURE ID NUMBER		
					GAS VALVE				



KEY MAP
SCALE: 1" = 400'



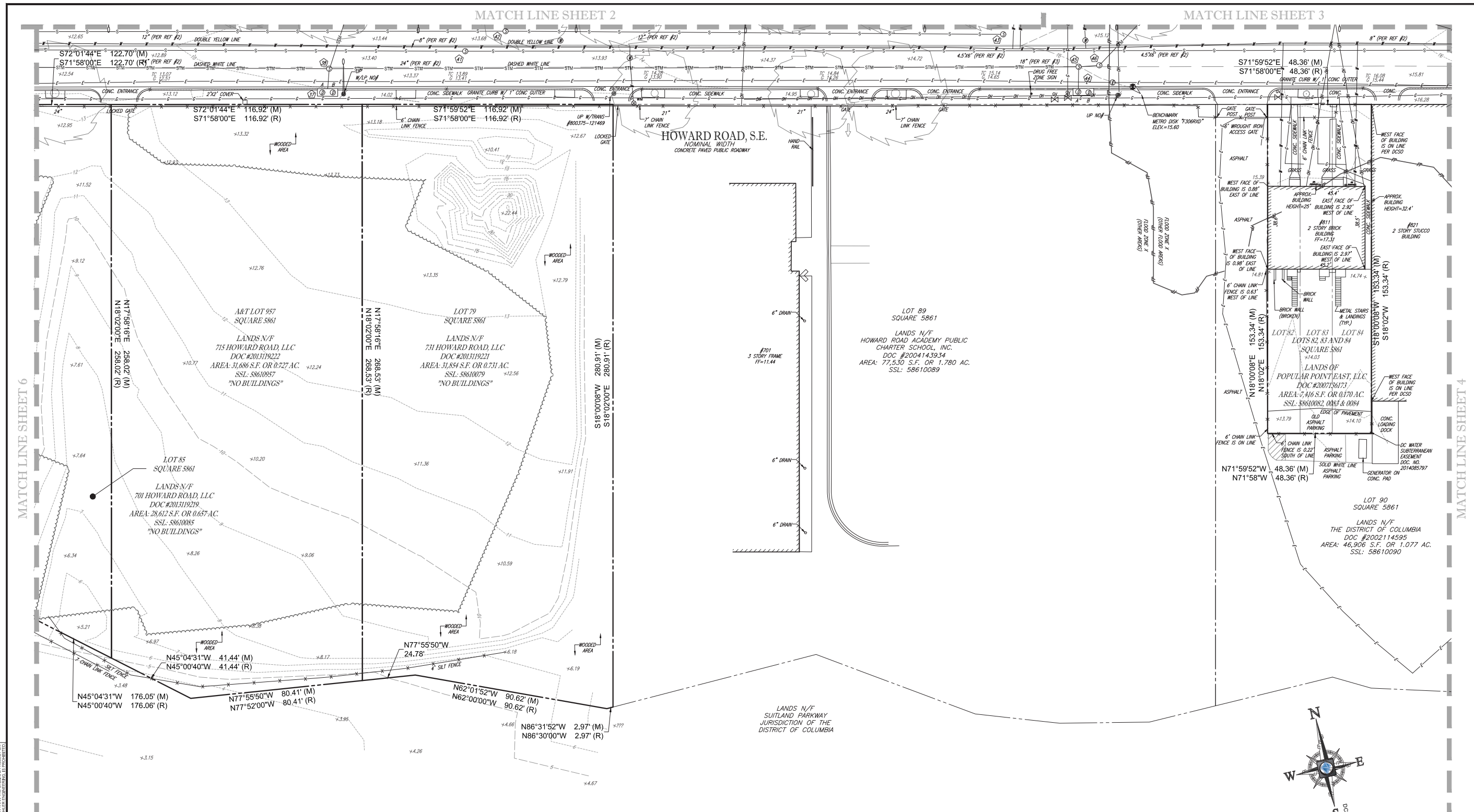
BOUNDARY & TOPOGRAPHIC SURVEY
REDBRICK - POPLAR POINT

A&T LOTS 937, 969, 971, 982, 986, 988, 1020, 1025-1031, 1036& 1037 SQUARE 5860
A&T LOTS 951 & 957 SQUARE 5861, LOTS 79, 82-98 SQUARE 5861
631-821 600-692 HOWARD ROAD, S.E.
WASHINGTON, DISTRICT OF COLUMBIA

FILE NO. SRW152035	DATE 06/03/2016	FIELD DATE 04/27/2016	CREW CHIEF J.W. - S.E.	DRAWN C.R.	REVIEWED J.E.B.	APPROVED J.S.F.	SCALE 1" = 20'	DWG. NO. 4 OF 6
-----------------------	--------------------	--------------------------	---------------------------	---------------	--------------------	--------------------	-------------------	--------------------

BOHLER ENGINEERING, INC. 22830 DAVIS DRIVE, SUITE 250
STERLING, VIRGINIA 20154
703.709.9500 • 703.709.9501 FAX
www.bohlerengineering.com

ROBERT C. HARR, JR. DATE
DISTRICT OF COLUMBIA LICENSED LAND SURVEYOR NO. 906059

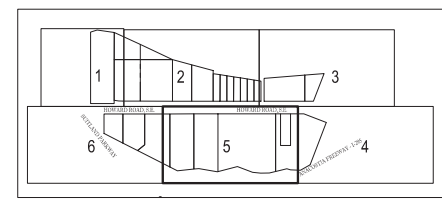


MATCH LINE SHEET 6

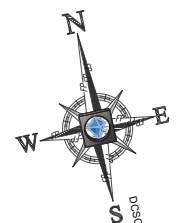
MATCH LINE SHEET 4

LEGEND

OH	OVERHEAD WIRES	123	EXISTING CONTOUR	⊙	TELEPHONE MANHOLE	●	BOLLARD	—○—	UTILITY POLE/LIGHT POLE
—○—	APPROX. LOC. UNDERGROUND GAS LINE PER UTILITY MARKOUT	x 123.45	EXISTING SPOT ELEVATION	⊙	ELECTRIC MANHOLE	—	U-BOLLARD	—	GLY WIRE
—○—	APPROX. LOC. UNDERGROUND WATER LINE PER UTILITY MARKOUT	x TC 123.45	EXIST. TOP OF CURB ELEVATION	⊙	WATER MANHOLE	—	METAL GUARDRAIL	—	TRAFFIC SIGNAL POLE
—○—	APPROX. LOC. UNDERGROUND TEL. LINE PER UTILITY MARKOUT	x G 123.45	EXIST. GUTTER ELEVATION	⊙	STORM DRAIN MANHOLE	—	—	—	TREE LINE
—○—	APPROX. LOC. UNDERGROUND ELEC. LINE PER UTILITY MARKOUT		TRAFFIC SIGNAL	⊙	WATER METER	—	—	—	TREE (SIZE AS NOTED)
—○—	APPROX. LOC. UNDERGROUND WATER LINE PER REF. #1		UTILITY POLE	⊙	GAS METER	—	—	—	
—○—	APPROX. LOC. UNDERGROUND ELEC. LINE PER REF. #3		MONITORING WELL	⊙	SIGN	—	—	—	
—○—	APPROX. LOC. UNDERGROUND SEWER LINE PER REF. #2 & 3		ELECTRIC METER	⊙	CLEAN OUT	—	—	—	
—○—	APPROX. LOC. UNDERGROUND STORM LINE PER REF. #2 & 3		ELECTRIC BOX	⊙	HYDRANT	—	—	—	
—○—	APPROX. LOC. FLOOD PLAN		SANITARY MANHOLE	⊙	WATER VALVE	—	—	—	
					GAS VALVE	—	—	—	



KEY MAP SCALE: 1" = 400'



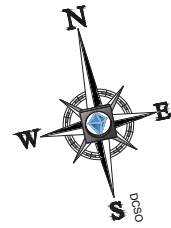
BOUNDARY & TOPOGRAPHIC SURVEY
REDBRICK - POPLAR POINT
 A&T LOTS 937, 969, 971, 982, 986, 988, 1020, 1025-1031, 1036& 1037 SQUARE 5860
 A&T LOTS 951 & 957 SQUARE 5861, LOTS 79, 82-86 SQUARE 5861
 631-821 600-892 HOWARD ROAD, S.E.
 WASHINGTON, DISTRICT OF COLUMBIA

FILE NO. SRW152035
 DATE 06/03/2016
 FIELD DATE 04/27/2016

BOHLER ENGINEERING
 2208 DAVIS DRIVE, SUITE 250
 STERLING, VIRGINIA 20164
 703.768.0000 - 703.768.0144
 www.bohlerengineering.com

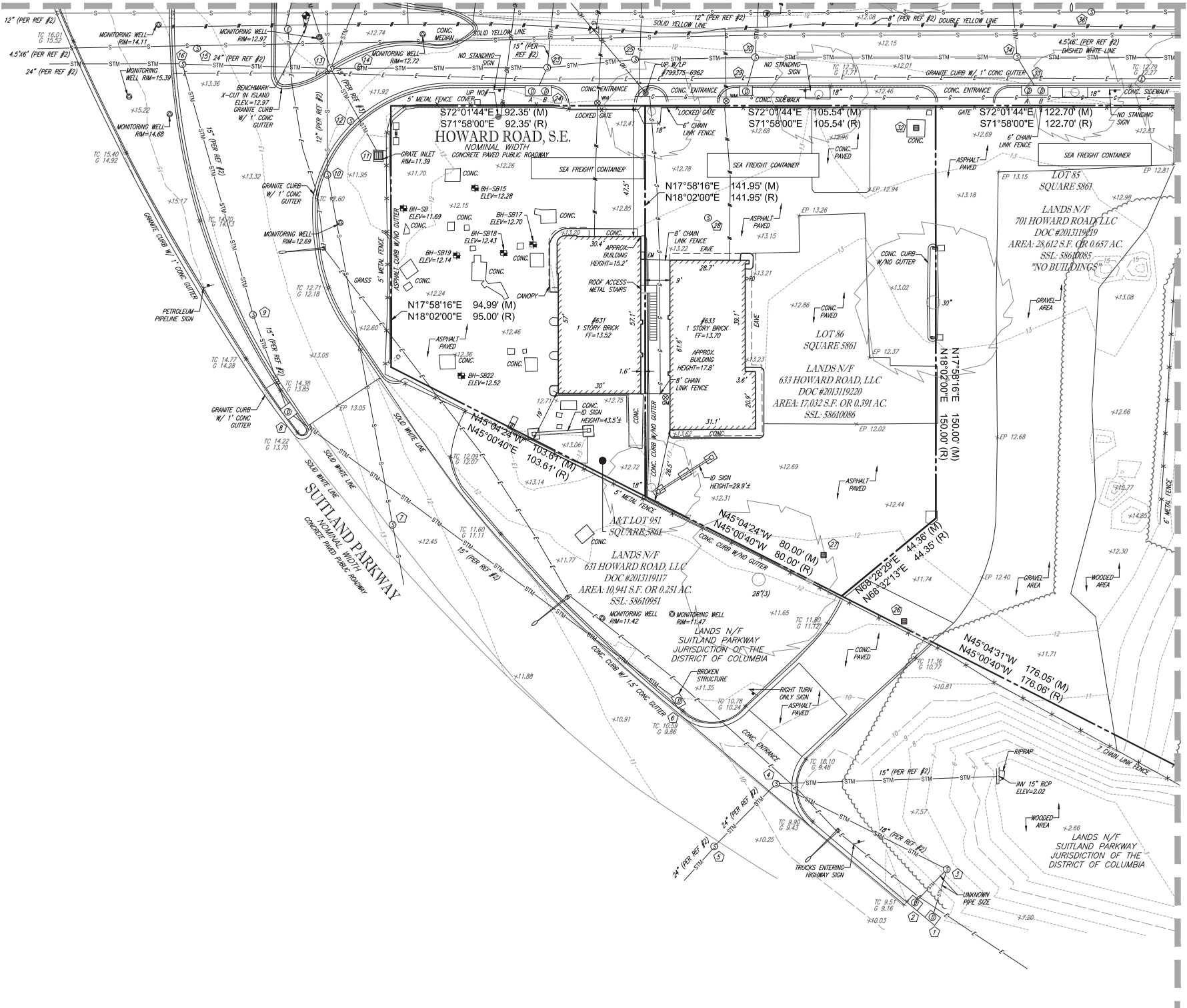
CREW CHIEF J.W. - S.E.
 DRAWN C.R.
 REVIEWED J.E.B.
 APPROVED J.S.F.
 SCALE 1" = 20'
 DWG. NO. 5 OF 6

ROBERT C. HARR, JR.
 DISTRICT OF COLUMBIA LICENSED LAND SURVEYOR NO. 906059



MATCH LINE SHEET 1

MATCH LINE SHEET 2

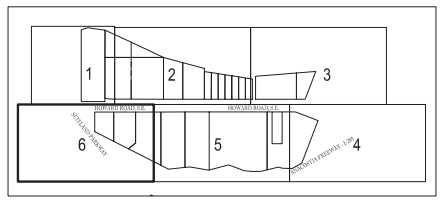


MATCH LINE SHEET 5

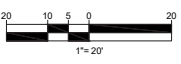
BOHLER ENGINEERING - ALL RIGHTS RESERVED. OTHER THAN THE ORIGINAL PROJECTOR, THE ENGINEER HAS NOT CONDUCTED A VISUAL INSPECTION OF THE PROPERTY OR THE PROJECTOR'S RECORD DRAWINGS.

LEGEND

OVERHEAD WIRES	EXISTING CONTOUR	TELEPHONE MANHOLE	UTILITY POLE/LIGHT POLE
APPROX. LOC. UNDERGROUND GAS LINE PER UTILITY MARKOUT	EXISTING SPOT ELEVATION	ELECTRIC MANHOLE	GUY WIRE
APPROX. LOC. UNDERGROUND WATER LINE PER UTILITY MARKOUT	EXIST. TOP OF CURB ELEVATION	WATER MANHOLE	TRAFFIC SIGNAL POLE
APPROX. LOC. UNDERGROUND TEL. LINE PER UTILITY MARKOUT	EXIST. GUTTER ELEVATION	STORM DRAIN MANHOLE	TREE LINE
APPROX. LOC. UNDERGROUND ELEC. LINE PER UTILITY MARKOUT	UTILITY POLE	WATER METER	TREE (SIZE AS NOTED)
APPROX. LOC. UNDERGROUND WATER LINE PER REF. #1	TRAFFIC SIGNAL	GAS METER	
APPROX. LOC. UNDERGROUND ELEC. LINE PER REF. #3	MONITORING WELL	SIGN	
APPROX. LOC. UNDERGROUND SEWER LINE PER REF. #2 & 3	ELECTRIC METER	CLEAN OUT	
APPROX. LOC. UNDERGROUND STORM LINE PER REF. #2 & 3	ELECTRIC BOX	HYDRANT	
APPROX. LOC. FLOOD PLAIN	SANITARY MANHOLE	WATER VALVE	
		GAS VALVE	
		STORM & SANITARY STRUCTURE ID NUMBER	



KEY MAP
SCALE: 1" = 400'



BOUNDARY & TOPOGRAPHIC SURVEY
REDBRICK - POPLAR POINT

A&T LOTS 937, 969, 971, 982, 986, 988, 1020, 1025-1031, 1036& 1037 SQUARE 5860
A&T LOTS 951 & 957 SQUARE 5861, LOTS 79, 82-86 SQUARE 5861
631-821 600-692 HOWARD ROAD, S.E.
WASHINGTON, DISTRICT OF COLUMBIA

FILE NO. SRW152035	DATE 06/03/2016	FIELD DATE 04/27/2016	CREW CHIEF J.W. - S.E.	DRAWN C.R.	REVIEWED J.E.B.	APPROVED J.S.F.	SCALE 1" = 20'	DWG. NO. 6 OF 6
-----------------------	--------------------	--------------------------	---------------------------	---------------	--------------------	--------------------	-------------------	--------------------

22939 DAVIES DRIVE, SUITE 209
STERLING, VIRGINIA 20164
703.706.9500 • 703.706.9501 FAX
www.bohlerengineering.com

